

MIDWESTERN UNIVERSITY COMMUNITY CONNECTION

NEWS FROM THE
MIDWESTERN
UNIVERSITY
BODY DONATION
PROGRAM

SPRING 2023

From the Director's Desk

It has been an exciting year for the Midwestern University Body Donation Program. Midwestern University (MWU) has fully returned to in-person instruction after the passing of the worst of the COVID-19 pandemic, and throughout the year we were excited to see students fully return to the classrooms. It is wonderful to see the campus populated with students, and for faculty and staff to be interacting with students in classrooms and laboratories—learning anatomy and appreciating the complexities of the human body through a hands-on experience that is made possible only through the generosity of our donors like you.

We hosted two new events this past year, which marked the beginning of new annual events and traditions for the MWU Body Donation Program. On November 5, 2022, we held “A Celebration of Life” ceremony to commemorate those who donated themselves to our program and chose to be interred in our new Midwestern University Ossuary Garden. Over 75 guests attended the outdoor ceremony and the program included the participation of MWU faculty, staff, and most importantly, our students who benefited from the generous gifts from our donors. Students from osteopathic medicine, podiatric medicine, and occupational therapy expressed their appreciation and gratitude through moving and eloquent reflections, poems, letters, instrumental performances, and vocal performances. There was not a dry eye in the audience or on the stage. The event concluded with a reception at the MWU Ossuary Garden, where the students were able to present white roses, converse, and

continue to convey their gratitude to the families and friends of the interred donors.

Our second event was a partnership with the Glendale Fire Department (GFD). From late January to early February 2023, GFD Paramedics and Emergency Medicine Technicians received training and practiced life-saving procedures utilizing donors at the MWU Body Donation Program. Medical students from the Arizona College of Osteopathic Medicine Emergency Medicine Club assisted with the event to provide their anatomical and medical expertise to the GFD firefighters. Through this partnership with the Glendale Fire Department, donors in the MWU Body Donation Program will further help to save lives by not only educating our students who will be future healthcare providers, but also assisting with the emergency medical training of our first responders.

We truly appreciate your generosity that supports the education of our future healthcare providers and our firefighters in the Glendale Fire Department. Your gift as a donor will live on as a legacy of knowledge and compassion that will be passed from our students to their future patients, and from GFD first responders to their patients. We humbly thank you for your invaluable gift and contribution towards the future of excellent, patient-centered healthcare.



Sandra E. Inouye, Ph.D.
*Director, Anatomical
Laboratories
and Midwestern University
Body Donation Program*

INSIDE

**Precision Medicine
Program Opens
Stand-Alone Certificate
Applications..... 2**

**Midwestern University
Partners with Abrazo for
Family Medicine Clinic..... 2**

**Faculty and Student
Perspectives on Anatomy.... 3**

**Midwestern University
Works with Glendale
Firefighters to Practice
Lifesaving Field
Techniques 4**



**MIDWESTERN UNIVERSITY
BODY DONATION PROGRAM**
Tomorrow's Healthcare Team

Precision Medicine Program Opens Stand-Alone Certificate Applications

Midwestern University's College of Graduate Studies is now offering a stand-alone Post-Graduate Certificate Program in Precision Medicine for clinicians and professionals currently practicing in the biological sciences.

The Precision Medicine Program was originally established as a dual-degree/dual-track program for students in all healthcare professions, offering either a Master of Science in Precision Medicine or a Post-Graduate Certificate in Precision Medicine. The new stand-alone option opens the field of study to practicing clinicians with graduate-level healthcare degrees or working professionals with graduate-level biological or biomedical sciences degrees, enabling them to augment their skills and knowledge to include current and practical knowledge of fundamental areas of genetics, genomics, biomarkers, and bioinformatics. Like the dual-degree/dual-track program, the stand-alone Post-Graduate Certificate Program is available in a flexible online format, which is well-suited to the busy schedules of working professionals. Alumni from Midwestern's

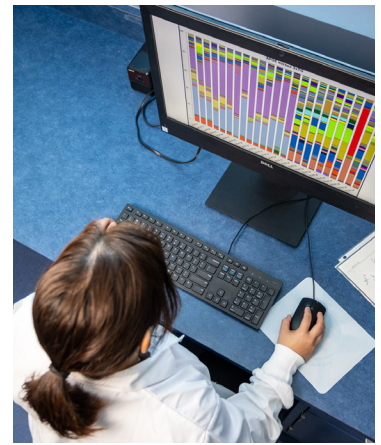
healthcare professional programs are especially invited to apply.

Precision medicine is an emerging approach for personalizing disease treatment and prevention strategies that takes into account individual variability in genes, environment, and lifestyle for each person.

Precision medicine uses this detailed information, paired with a patient's health history, to create customized care and treatment plans. This approach is already in use in treating diseases such as cancer, neurological disorders, infectious diseases, and rare childhood disorders.

For the complete story, visit:

<https://www.midwestern.edu/academics/degrees-programs/college-graduate-studies/post-graduate-certificate-pgcert-precision-medicine-college-graduate-studies-online>



The Precision Medicine Program is now offering a stand-alone certificate program to practicing healthcare professionals.

Midwestern University Partners with Abrazo for Family Medicine Clinic

Midwestern University has partnered with Abrazo Health to operate the Abrazo Family Medicine Residency Clinic located on the Abrazo Central Campus in north central Phoenix. Clinic ownership and operation were transferred to the University effective January 2, 2023, and it has been renamed the Midwestern University Comprehensive Care Clinic – Central Phoenix, Abrazo Family Medicine Residency Training Site.

Abrazo will continue to sponsor the hospital's Family Medicine Residency Program, which has been located at Abrazo Central Campus since 1978, while faculty and clinic staff will now be employed by Midwestern University.

Continuity of patient care will be unaffected by the new partnership, and the doctors at this clinic that patients have come to trust with their care will remain at this location.

For the complete story, visit:

<https://clinics.midwestern.edu/news/midwestern-university-partners-abrazo-family-medicine-clinic-central-phoenix>



Midwestern University's newest clinic serves patients in Central Phoenix in collaboration with Abrazo Health.

The Comprehensive Care Clinic, located at 2000 W. Bethany Home Rd., Suite 200, offers new opportunities for Midwestern University clinicians and students to provide patient-centered family medical care to the north central Phoenix community. The clinic's location at the Abrazo Central Campus also provides expanded hospital rotation opportunities and experience for students and residents.

Perspectives on Anatomy: Midwestern University Faculty and Student Profiles



Faculty Profile:
Leigha Lynch, Ph.D.
Professor, Anatomy

Dr. Leigha Lynch joined Midwestern University in 2020. She currently teaches human anatomy courses in the Biomedical Sciences,

Occupational Therapy, Physical Therapy, Physician Assistant, and Nurse Anesthesia programs.

Dr. Lynch's Perspective: The anatomical sciences are where the practice of being a clinician begins. Students enter their first days of gross anatomy expecting to come away with a vast knowledge of human anatomy, but they are often surprised by the profound appreciation for the individual patient that they gain in this course.

As the “first patients” of our students, donors provide an amazing opportunity for beginning clinicians to learn the intricate nature and variability of the human body. Through dissection, each donor teaches students the complexities of the muscular, nervous, and vascular systems in a hands-on manner that cannot be provided through any other educational resources. Students also gain an appreciation for anatomical variation and how to recognize and use this knowledge in their medical practices.

Each donor also brings a lifetime of stories and experiences that students come to recognize through the lines on their faces, or the calluses on their hands. They recognize the cancer their donor suffered through, the children they gave birth to, or the surgeries they experienced. Each of these unique characteristics teaches students to recognize and appreciate the individuality of their future patients and how each of their stories and experiences ties to their anatomy.

Gross anatomy is an experience that truly cannot be matched and is made possible because of the generosity of donors.



Student Profile: Zhangmuge “Cynthia” Cheng, second-year medical student, Arizona College of Osteopathic Medicine

Prior to attending Midwestern University, Zhangmuge “Cynthia” Cheng (AZCOM 2025) graduated from Tufts University with an M.S. in Nutrition and worked as a

Registered Dietitian Nutritionist in the New England area.

Cynthia's Perspective: Many physicians say, “I remember my first patient like it was yesterday, and I still use the lessons learned from them to this day.” As I finish my second year of medical school, I know this will hold true for me.

On August 16th, 2021, I met my first patient in Sahuaro Hall. Little did I know that this encounter, and the many subsequent encounters over the next year, would bring me a multitude of knowledge and skills that I never thought possible.

You might ask, who was my first patient? My first patient was one of the many gracious donors who had given the ultimate gift in the name of science and medical education. My first patient challenged me to think critically about medicine by showing me variations in anatomy. They also showed me how to examine the unconventional manifestations of diseases. Most importantly, they taught me to always be humble by reminding me of our shared vulnerability and humanity.

I would later return to the Anatomy Lab as a teaching assistant, determined to give back the gifts my first patient had given me through teaching and mentoring. I am deeply grateful for the time I spent with my first patient and the other donors. I promise to carry the lessons learned with them throughout my career, hoping to someday make a difference in the lives of my future patients.

Midwestern University Works with Glendale Firefighters to Practice Lifesaving Field Techniques



Glendale firefighters collaborated with Body Donation Program faculty and students to enhance their field training.

Midwestern University partnered with Glendale Fire Department firefighters to help them practice critical emergency procedures that they will eventually use on patients in the field, via a collaboration with the University's Body Donation Program.

Over the course of four sessions, Glendale firefighters received training and hands-on practice in procedures such as emergency intubation, placement of chest tubes, intraosseous vascular access to establish IVs, cricothyrotomy (a procedure to establish an airway on a patient in extreme distress), and other extremely important lifesaving techniques used in the field every day. Since all Glendale firefighters are required to qualify as EMTs, and approximately half of them are also

paramedics, and the entire 254-member department had the opportunity to participate. The firefighters practiced these techniques using donors from the Midwestern Body Donation Program under the guidance of University faculty, staff, and healthcare students from the Emergency Medicine Club, giving the participants a chance to perfect their skills using actual human anatomy before employing the techniques in the field.

The donor training sessions mark the newest in a series of collaborations between the Glendale Fire Department and Midwestern University, which includes a ride-along program for Midwestern medical and physician assistant students, a Crisis Response Unit stationed at the University's Glendale Campus, and more.

For the complete story, visit:

<https://www.midwestern.edu/news-stories/midwestern-university-offers-glendale-firefighters-unique-opportunity-practice-lifesaving-emergency>

We hope you have enjoyed seeing just a few of the ways that Midwestern University enriches the communities we serve. Thank you for participating in our Body Donation Program, which supports our students in the detailed study of human structure (anatomy) through the ability to study the whole human body. The integral knowledge provided by this opportunity is foundational for the education of our nation's future healthcare professionals.

We recognize the thoughtful consideration that goes into the decision to donate to our program and wish to acknowledge and express our gratitude to those individuals who generously choose to invest in the future of healthcare by making this donation. To learn more, visit www.midwestern.edu/bodydonation.



MIDWESTERN UNIVERSITY
BODY DONATION PROGRAM
Tomorrow's Healthcare Team

20195 North 57th Avenue | Glendale, Arizona 85308
623-806-7990 | azbodydonation@midwestern.edu